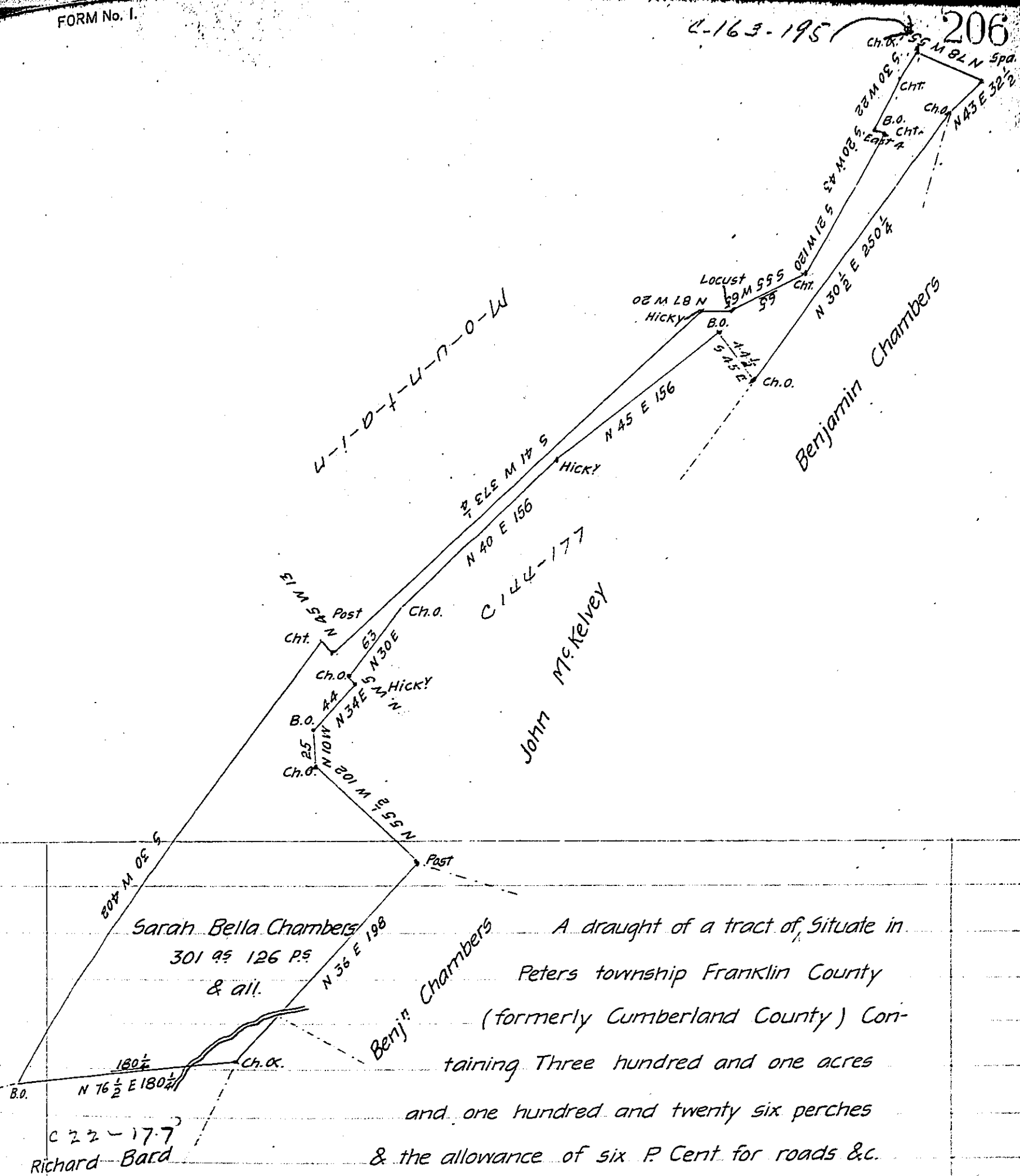


2-163-195

206



Sarah Bella Chambers
301 95 126 P^s
& all.

A draught of a tract of, Situate in
Peters township Franklin County
(formerly Cumberland County) Con-
taining Three hundred and one acres
and one hundred and twenty six perches
& the allowance of six P. Cent for roads &c.

Surveyed the 13th day of December 1787 by the late
Mathew Henderson Esq^r D.S. in pursuance of a warrant grant-
ed Sarah Bella Chambers Dated the 7th day of September 1784.
Examined from the Original Draft as filed in the D.S. Office of
Franklin County the 8th day of Feb^ry. 1819.

Jacob Spangler Esq^r Surveyor General. Arch^d Fleming D.S.

IN TESTIMONY that the above is a copy of the original remaining on file in
the Department of Internal Affairs of Pennsylvania, made
conformably to an Act of Assembly approved the 16th day of
February, 1833, I have hereunto set my Hand and caused
the Seal of said Department to be affixed at Harrisburg,
this ninth day of December 1904.

Loose P. Brown
Secretary of Internal Affairs.